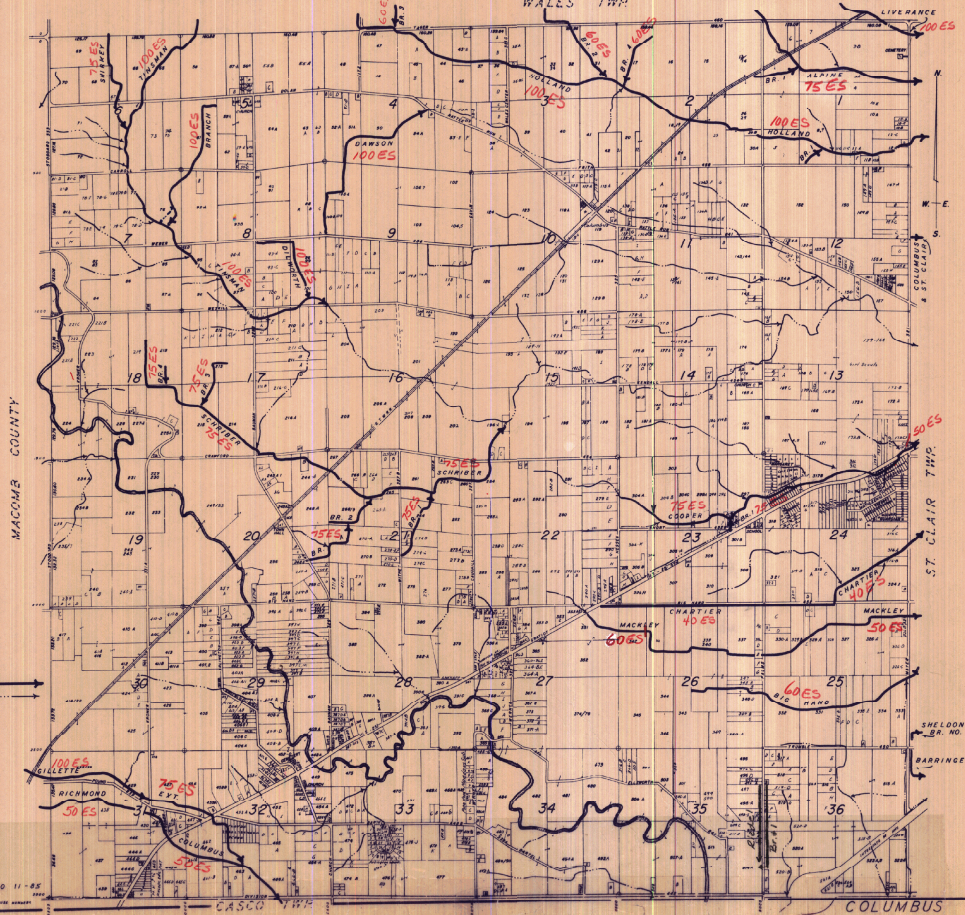


COLUMBUS TOWNSHIP T. 9 N. R. 15 E. ST. CLAIR COUNTY, MICH. SCALE: 1" = 2000'

FILE LETTER "P" 3000' DISTANCE FROM 1847 CORNER TO 1

WALES TWP.

ESTABLISHED COUNTY DRAINS



COUNTY DRAINS
WATERCOURSE

DRAINS CORRECT TO 11-85
SHELDON BR. NO. 1
BARRINGER

COLUMBUS TOWNSHIP

P

9